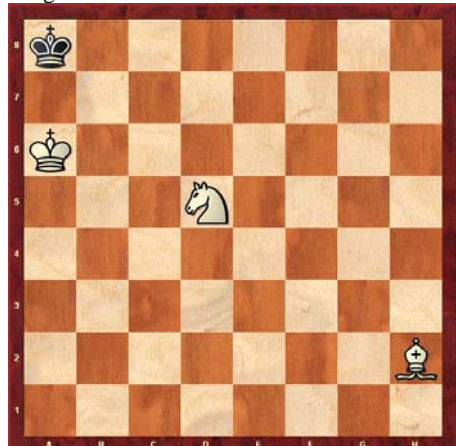


# 5. How do I Checkmate with Knights?

Name: \_\_\_\_\_

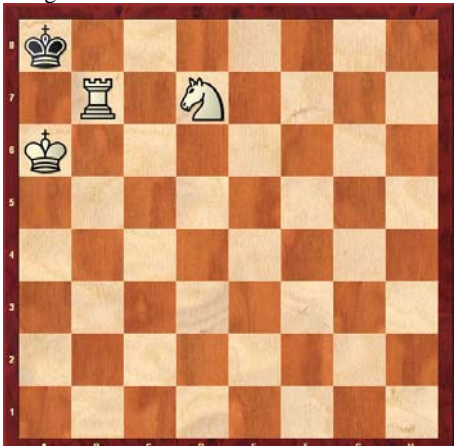
School: \_\_\_\_\_

Diagram 1 White to Move – Checkmate in 1



Find the checkmate!

Diagram 2 White to Move – Checkmate in 1



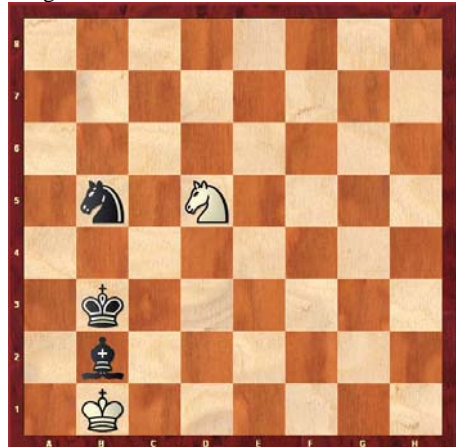
Find the checkmate!

Diagram 3 White to Move – Checkmate in 1



Find the checkmate!

Diagram 4 Black to Move – Checkmate in 1



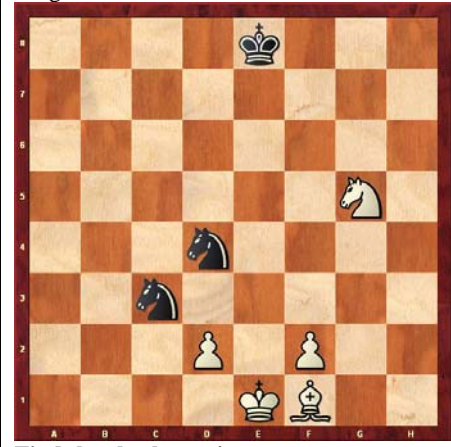
Find the checkmate!

Diagram 5 Black to Move – Checkmate in 1



Find the checkmate!

Diagram 6 Black to Move – Checkmate in 1



Find the checkmate!

Diagram 7 White to Move – Checkmate in 1



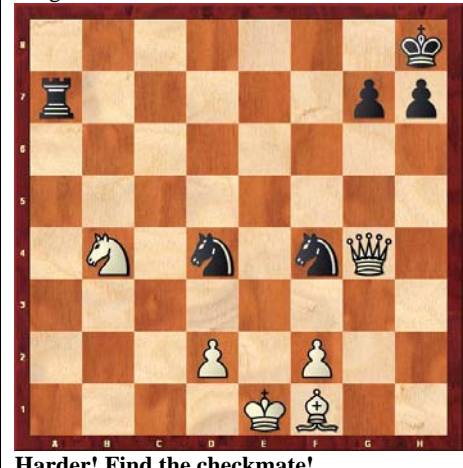
Tricky! Find the checkmate!

Diagram 8 White to Move – Checkmate in 2



Harder! Find the checkmate!

Diagram 9 Black to Move – Checkmate in 2



Harder! Find the checkmate!