

1. How do the Major Pieces move?

Name: _____

School: _____

There are six different pieces in the game of chess. Each has its own value and movement. Write down the value for each type of piece listed below.

♙ Pawn: _____ ♘ Knight: _____ ♗ Bishop: _____ ♖ Rook: _____ ♑ Queen: _____ ♔ King: _____

Every piece (except the pawn) captures the same way it moves. Here is how each piece except the pawn moves.

The ♖ **Rook** moves along ranks and files. The Rook can move up and down and also left to right.

The ♔ **King** moves only one square at a time in any direction. If you lose your King, you lose the game.

The ♗ **Bishop** always moves on a diagonal. A Bishop always stays on the same color square it started on.

The ♑ **Queen** can either move like a Rook or like a Bishop. The Queen is your strongest fighting piece.

The ♘ **Knight** moves in a L-shape two squares and then turns one square. Only a Knight jumps over a piece.

Diagram 1 – White to Move



Place a **B** on the **11** squares the white Bishop can move to this turn

Diagram 2 – White to Move



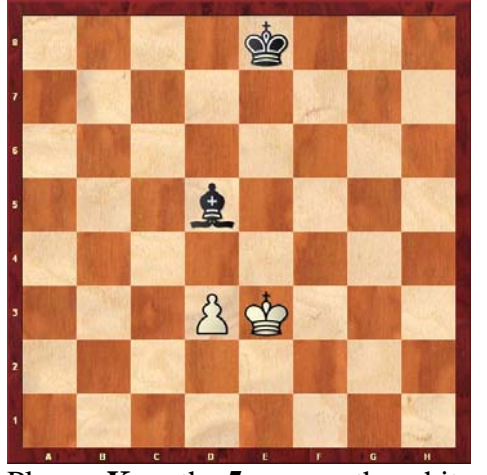
Place a **R** on the **9** squares the white Rook can move to this turn

Diagram 3 – White to Move



Place a **Q** on the **18** squares the white Queen can move to this turn

Diagram 4 – White to Move



Place a **K** on the **5** squares the white King can move to this turn

Diagram 5 – White to Move



Place a **N** on the **7** squares the white Knight can move to this turn

Diagram 6 – White to Move



Play the Piece Game! Win the King!
Place chips at **a3 h3 a6 h6**